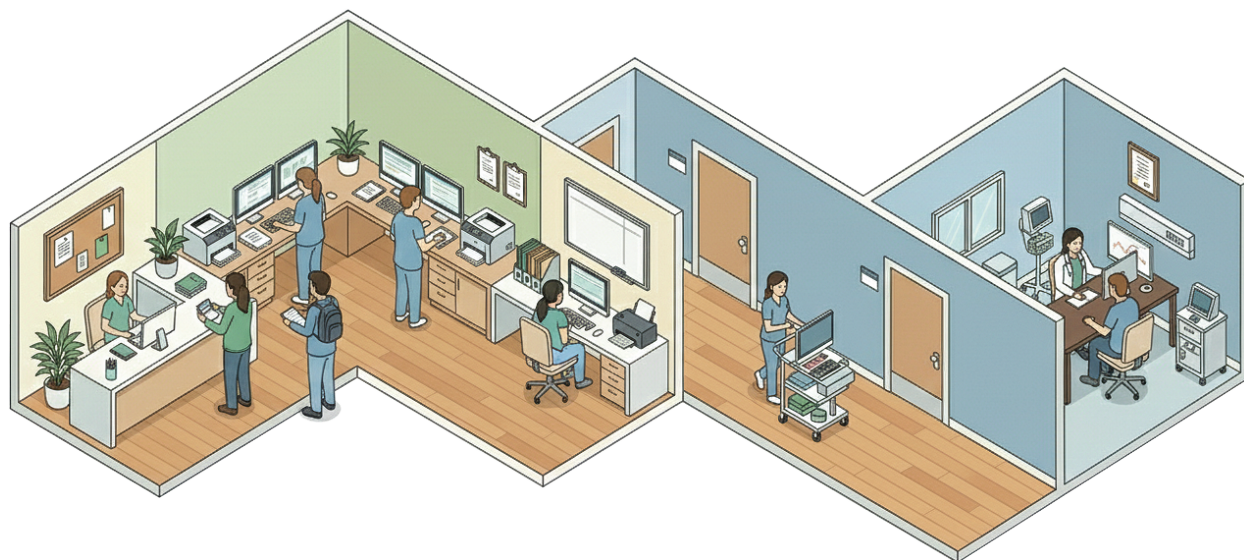


Group Practices

Where AMBIR Fits in Your Environment

AMBIR®



Front Desk / Reception Area

Card Scanners (Recommended 2+ Units. One at Each Check-in Station)

[PS667](#), [DS687](#), [DS690GT](#)

Signature Pad (Check-in & Check-out)

[SP110](#)

Document Scanners (Daily Scanning of Insurance Documents, Referrals, Forms)

[DS700GT](#), [DS820ix](#), [DS830ix](#), [DS340](#), [DS1060](#)

Barcode Scanners (Patient Check-in with Appointment Barcodes, Supply Inventory)

[DB100](#), [BR112](#), [BR212](#)

Mobile Scanners (Provide Workspace Flexibility to Move Across Workstations)

[PS600](#), [DS490](#)

Treatment / Exam Rooms

Signature Pad (Used for Chairside/Bedside Procedure Consent)

[SP110](#)

Webcam (Telemed Consultations, Virtual Follow-up, Medical Photography & Documentation)

[FC204-AC](#)

Mobile Scanners (Document Scanning at Point of Care)

[PS600](#), [DS490](#)

Group Practices

Where AMBIR Fits in Your Environment

AMBIR®



Back Office / Administration

High-Speed Scanners (Batch Processing, Digitizing Intake Forms, Historical Record Conversion)
[DS820ix](#), [DS830ix](#), [DS340](#), [DS1060](#)

Document Scanners
(Smaller Batch Doc Scanning for Contracts, Invoices)
[DS700GT](#), [DS820ix](#), [DS830ix](#), [DS340](#), [DS1060](#)

Thermal Label Printers
(Chart Labels, File Organization, Specimen Labels)
[LP400-NE](#), [LP230-NE](#)

Mobile Scanners
(Flexibility for Different Administrative Workstations - Records Room, Billing Office, Management Office)
[PS600](#), [DS490](#)



Lab / Dispensary Area

Barcode Scanners
(Inventory Tracking, Reordering, Managing Lab Work)
[BR112](#), [BR212](#), [BR312](#)

Document Scanners
(Scanning Lab Paperwork & Invoices)
[DS700GT](#), [DS820ix](#), [DS830ix](#), [DS340](#), [DS1060](#)