

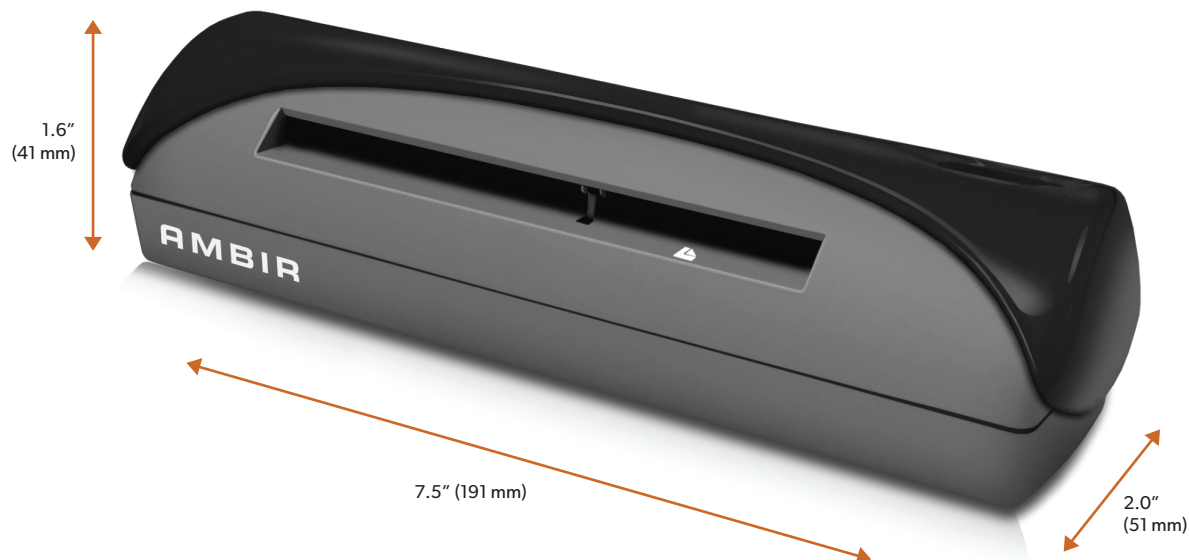
ImageScan Pro® 667

Simplex Card & ID Scanner with AmbirScan

AMBIR™

www.ambir.com

Sku # PS667-AS
\$199.95



The PS667 is the Complete Solution

No matter what mobile means to you, the Ambir PS667 can handle it. Whether you're at a desk capturing driver's licenses, or in a hospital scanning patient IDs on a mobile cart, the PS667 has the compact size and USB power to go everywhere.

The Ambir PS667 is designed to handle serious workloads. Inside, you'll find high quality imaging hardware that captures quick, clear images of identification and insurance cards. Outside, you'll find a durable shell that stands up to continuous use.

Ideal industries:



Healthcare



Government



Legal



Banking & Finance



Retail



Hospitality

AMBIR™

www.ambir.com / sales@ambir.com / 630-530-5400 option 2

ImageScan Pro® 667

Simplex Card & ID Scanner with AmbirScan



Every Ambir scanner comes with comprehensive, U.S.-based phone & online chat support.



CITRIX® ready

TWAIN™

Features & Benefits:

A Perfect Fit Anywhere.

No matter what mobile means to you, the Ambir PS667 can handle it. The PS667 has the compact size and USB power to work anywhere you need it.

Professional Grade Quality.

The Ambir PS667 is designed to handle serious workloads. Inside, you'll find high quality imaging hardware that captures quick, clear images of identification and insurance cards. Outside, you'll find a durable shell that stands up to continuous use.

Your Workflow Upgraded.

At just three seconds per scan, the Ambir PS667 makes quick work of capturing any card. Identification, and insurance cards are handled easily, along with credit cards with raised characters. Quit wasting time with flatbed scanners. Get the right tool for the job.

Handles Cards of all Kinds.

Designed with a wide range of implementations in mind, the Ambir PS667 comes with an enhanced TWAIN driver, which easily facilitates communication with any computer or thin client station. Simply plug in and start capturing images immediately.

Specifications

Model #:	PS667	Scan Speed:	3 seconds per single-sided card in grayscale mode at 300dpi
Interface:	USB 2.0 hardware & compatible w/USB 1.1	Scan Area:	Maximum 4.13" x 10" (105mm x 254mm)
Dimensions (LxWxH):	7.5 x 2.0 x 1.6 (191mm x 51mm x 41mm)	System Requirements:	Windows 7/8/10/11 One available USB port
Weight:	8.62 oz (244g)	Media Thickness:	Up to 1.4mm
Scan Modes:	48-bit internal color/outputs 24-bit true color, 8-bit greyscale & 1-bit B&W	Drivers:	TWAIN, WIA
Optical Resolution:	Up to 600 dpi	Developer Resources:	SDK available upon request
Paper Sensor:	Mechanical	Included Software:	AmbirScan
Image Sensor:	CMOS CIS (Contact Image Sensor)	Warranty:	2 Years
Cable Length:	6' (1.8m) Detachable USB		

www.ambir.com / sales@ambir.com / 630-530-5400 option 2

©2022 Ambir Technology Inc. All rights reserved. The Ambir logo is a trademark of Ambir Technology Inc. Features, specifications and bundled software application(s) and/or version numbers of software applications are subject to change without notice. Windows is a registered trademark of Microsoft Corporation in the United States and other countries. All trademarks and registered trademarks are the property of their respective owners.

AMBI R[™]
www.ambir.com